

# STL4 SERIES OUTDOOR LIGHTING

STL4-80-200W-30K

STL4-80-200W-50K

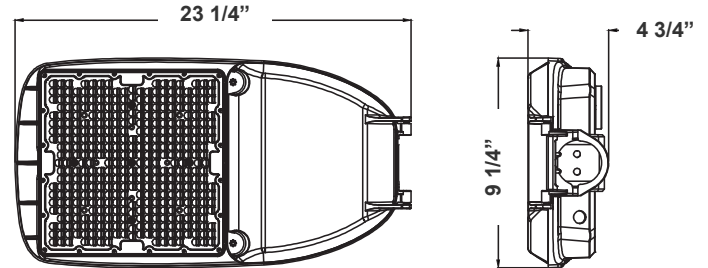
**MP** Multi Power/Wattage (Selectable)

Customer Name: \_\_\_\_\_

Project Name: \_\_\_\_\_

Note: \_\_\_\_\_

Type: \_\_\_\_\_



This outdoor lighting is ideal for general site lighting, street, roadway, alleys, loading docks, doorway, pathway, and parking areas

9 1/4"(H) x 23 1/4"(W) x 4 3/4"(D)

## Features

- Light Grey Finish
- With NEMA twist-lock Photocell Socket (Shorting Cap included)
- 7-Year Warranty
- Outdoor Light

## Technical Specifications

### Electrical:

- Voltage: 120-277V; 60Hz AC
- Power Factor: >0.95
- Wattage: 80W/100W/150W/200W
- Efficacy: 140LM/W

### Mechanical:

- Die-cast Aluminum with Powder Coat Finish (Light Grey)
- Cord Type: 40" SJTW 18/3 AWG Cable
- With 2-15/16" Diameter Pole Entry with Adapter Bracket Inside for Smaller Pole Diameters
- Maximum Ambient Temperature: 104°F
- IP Rating: IP65, Suitable For Wet Location
- 7-Year Warranty

### Lighting:

- MP: Multi-Power Switch Is Located On The Back Of The Fixture
- Lens Type: Optical TYPE III Lens, High Light Transmittance PC, Anti-UV and Flame Resistant
- Dimming: 0-10 Dimming
- Driver Located in Isolated Compartment for Improved Thermal Management
- Total Lumens: 28000LM Max.
- Color Temperatures: 3000K/5000K
- Color Rendering Index: CRI ≥ 70
- Rated Life: 70,000 hrs

### Applications:

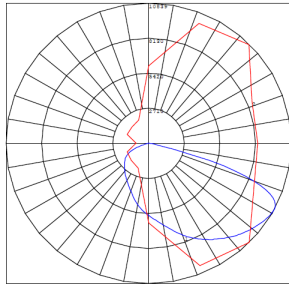
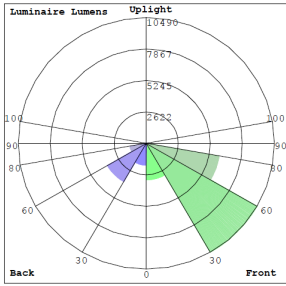
- Ideal for general site lighting, street, roadway, alleys, loading docks, doorway, pathway and parking areas

## Other Models:

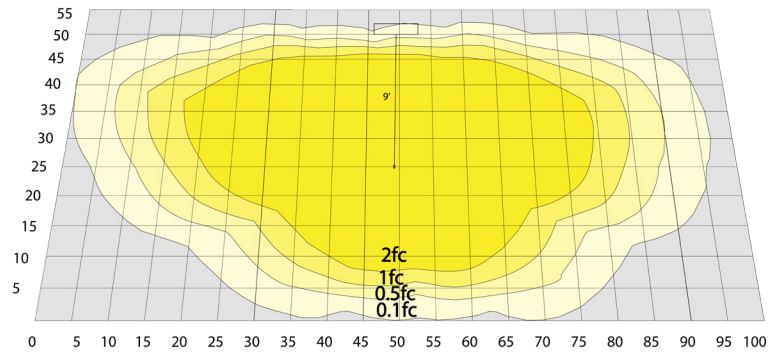
- 50W | 7250LM | STL4-15-50W-30K
- 100W | 14500LM | STL4-30-100W-30K
- 50W | 7250LM | STL4-15-50W-50K
- 100W | 14500LM | STL4-30-100W-50K



## Photometrics: STL4-80-200W

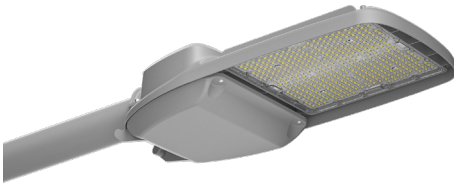


BUG Rating: B3-U0-G3



Area 55'x 100' Mounting Height: 9'

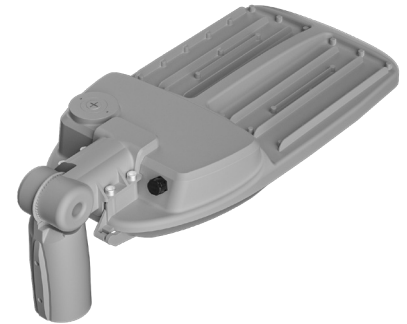
## Other Views:



Side View  
(Shown With Slip Fitter)



Front View  
(Shown With Slip Fitter)



Back View  
(Shown With Slip Fitter)

## Performance Table: STL4-80-200W

MODEL NO.	Wattage	Voltage	Lumens	Color Temp.	BUG Rating	LPW
STL4-80-200W-30K	80W 100W	120-277V	1120LM 14000LM	3000K	B3-U0-G3	140
STL4-80-200W-50K	150W 200W		21000LM 28000LM	5000K		

## Sample Ordering

Model Min. Watt Max. Watt Color Temp.

STL4 - 80 - 200W -

30K = 3000K  
50K = 5000K

## Accessories:

Blank = No Option For Accessories  
PC-TWIST = 1800W TUNGSTEN TWIST LOCK PHOTOCELL  
STL4-SF = SLIP FITTER FOR POLES UP TO 2-3/4" O.D

## Factory-Installed Options

Blank = No Option  
OPT-STL-SH-CW = Half shroud option  
OPT-STL-SH-FG = Full glare shroud option

## ACCESSORIES:



PC-TWIST  
1800W TUNGSTEN TWIST LOCK  
PHOTOCELL



STL4-SF  
SLIP FITTER FOR POLES UP TO  
2-3/4" O.D

## FACTORY-INSTALLED OPTION:



OPT-STL-SH-CW  
HALF SHROUD OPTION



OPT-STL-SH-FG  
FULL-GLARE SHROUD OPTION

